

ZKBioSecurity – Setup Interlock

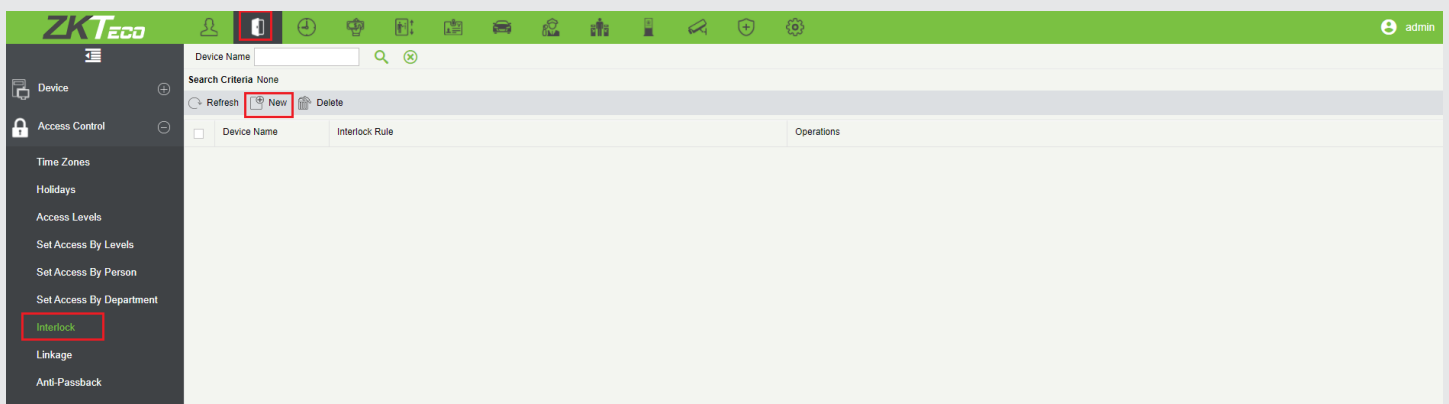
Interlock can be for two or more locks belonging to one controller. When one door is opened, the others will be closed, or you cannot open the door.

Before setting the interlock, ensure that you have a door sensor to a controller, which has been set as NC/NO state

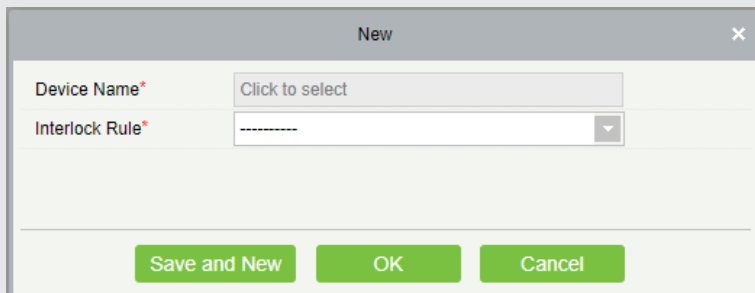
Following are steps to take when to do interlock.

Device > Access Control > Interlock

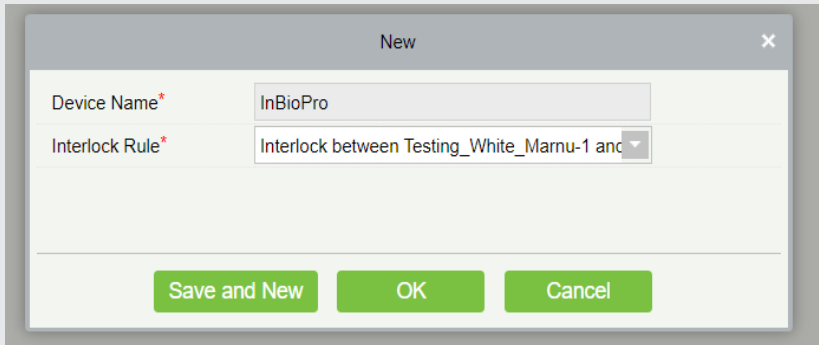
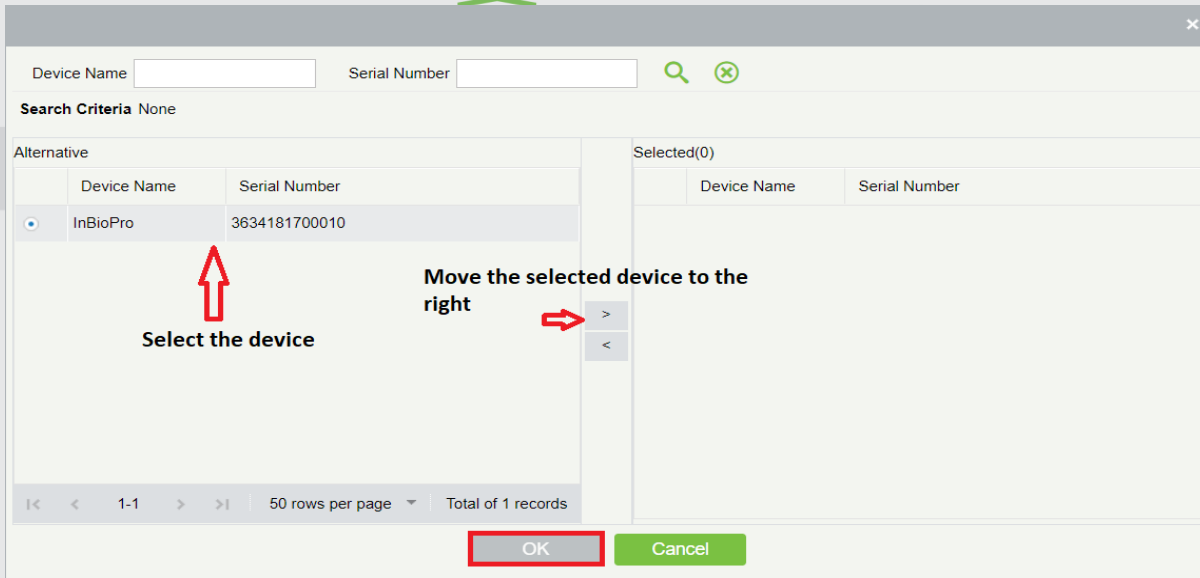
Click on New



Click on Device Name – When users add a device, interlocked devices cannot be seen in a dropdown list.

The 'New' dialog box is shown with a title bar containing 'New' and a close button. It has two input fields: 'Device Name*' with a dropdown menu showing 'Click to select', and 'Interlock Rule*' with a dropdown menu showing '-----'. At the bottom, there are three buttons: 'Save and New', 'OK', and 'Cancel'.

Select the devices you want to move to the right-hand side with the > button.
Those doors will be interlocked with each other.



NB: Interlock rule will vary with the number of doors controlled by selected devices

1 DOOR > No interlock settings

2 DOORS > 1-2 two-door interlock setting

4 DOORS > 1-2 two-door interlock, 3-4 two-door, 1-2-3 three-door door interlock 1-2-3-4 four-door interlock

Click OK.