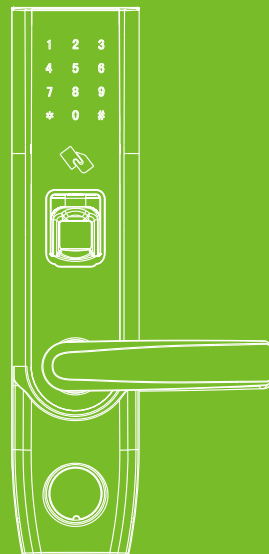


Installation Instruction

TL400B

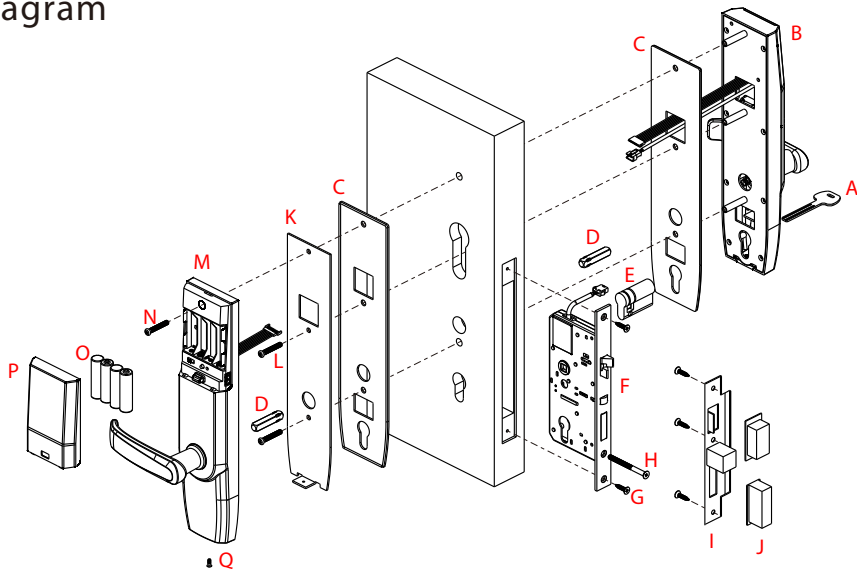
Version: 1.2

Date: Nov.,2017

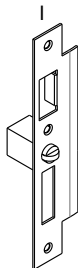
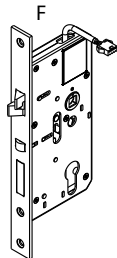
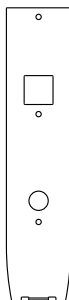
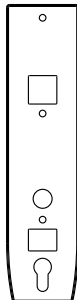
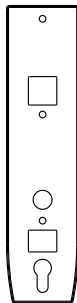
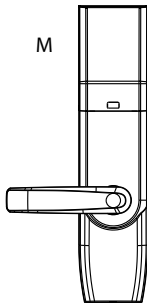
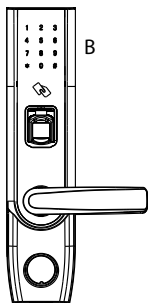


Before Installation

Diagram

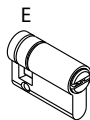
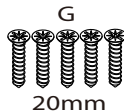
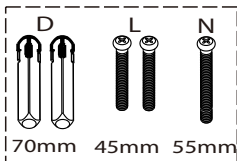
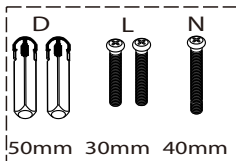


Packing List



Mounting hardware package for 35-50mm door thickness

Mounting hardware package for 50-65mm door thickness



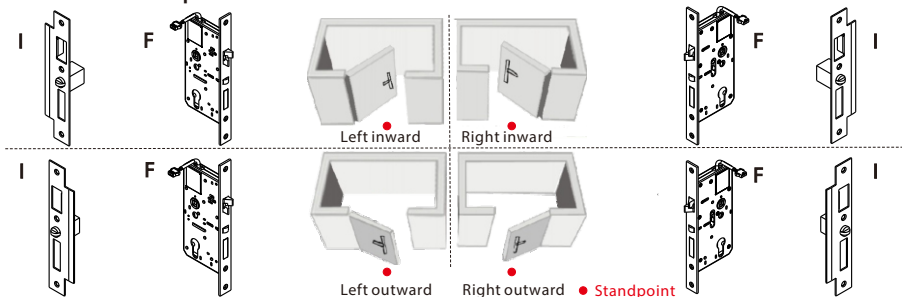
Note: To ensure proper functioning of the device only use the mounting hardware package for your door thickness.

Door Preparation

1. Check door thickness, prepare the mounting hardware package and cylinder.

Door Thickness (mm)	D Spindle Length (mm)	N Screw Length (mm)	L Screw Length (mm)	Q Screw Length (mm)	E Cylinder Length (mm)
35-50	50	40	30	8	40
50-65	70	55	45	8	50

2. Check door open direction.

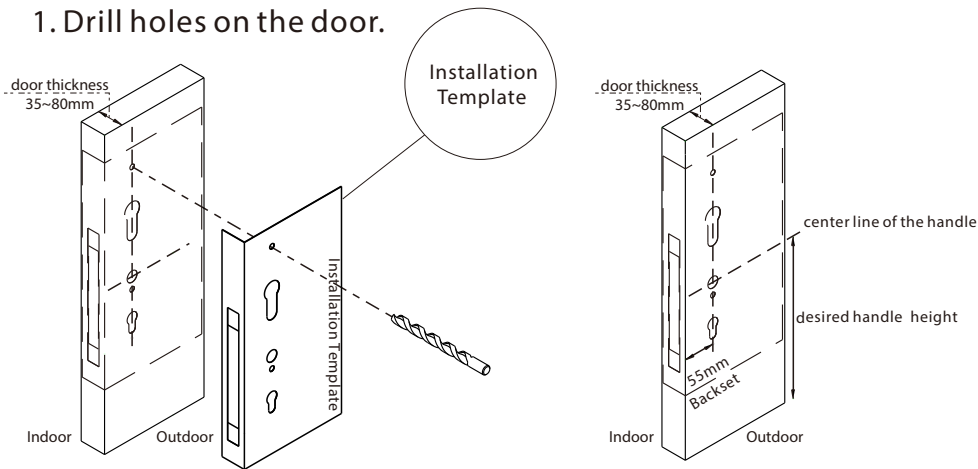


Note 1: There are two types of mortise (F): one is for left open, the other is for right open. Please use the correct one.

Note 2: There are two types of strike plate (I): one is for inward open, the other is for outward open. Please use the correct one.

Installation

1. Drill holes on the door.

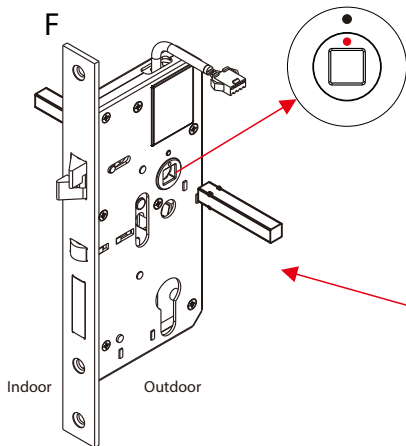


Note 1: Align the template along the vertical center line of the mortise (F) at the desired handle height, and tape it to door.

Note 2: Mark the holes first, then start drilling.

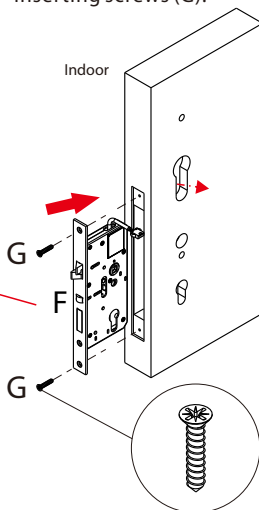
Installation

2. Install the mortise(F).

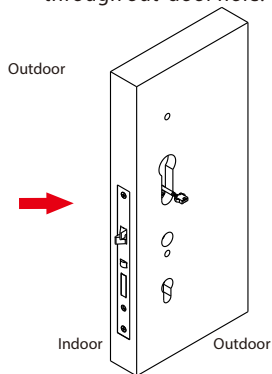


2.1 The clutch dot must be vertically centered with mortise dot, then put this side toward outdoor.

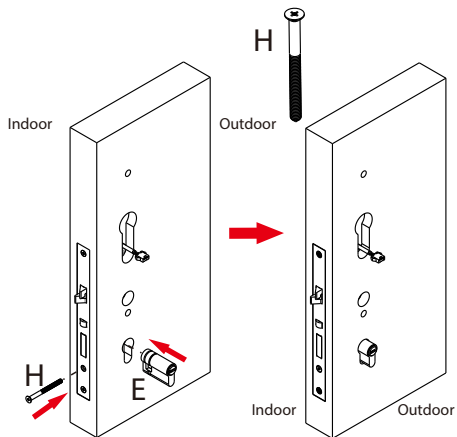
2.2 Installing mortise (F) by inserting screws (G).



2.3 The mortise cable must through out door hole.

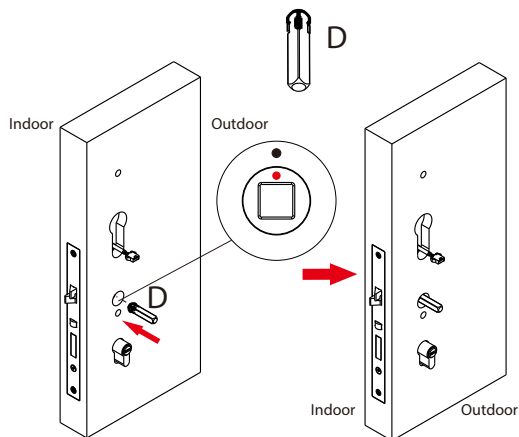


3. Install lock cylinder(E).



Note: Installing the cylinder in right direction, put the key hole toward outdoor, then insert screw (H) to secure cylinder(E).

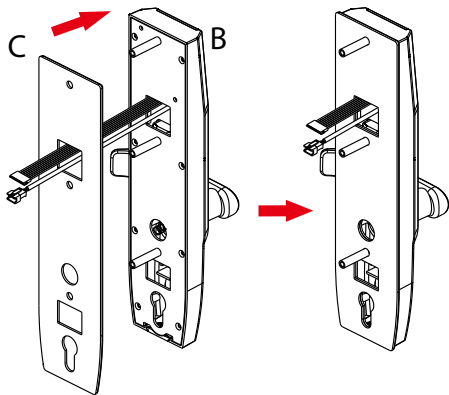
4. Install spindle(D).



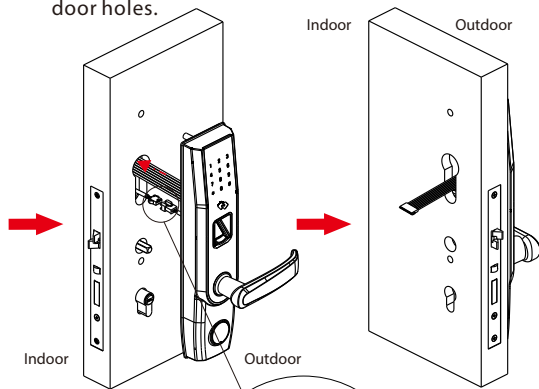
Note: Ensure the dot of clutch is vertically upward.

5. Install outdoor unit(B) with gasket(C).

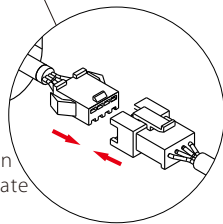
5.1 Put the gasket (C) on the outdoor unit(B).



5.2 Attach outdoor unit (B) to door by putting it through door holes.

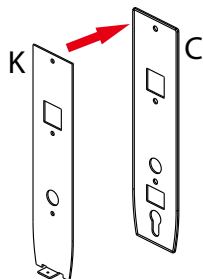


Note: Connect the outdoor unit (B) cable to the mortise. There are two cable on the outdoor unit, please connect appropriate cable according to the size of joint.

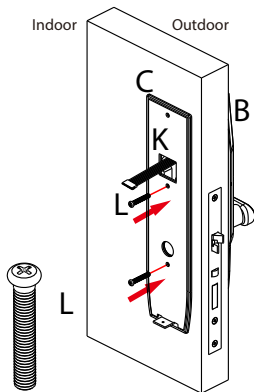


6. Install mounting plate (K) with gasket (C) on the door.

6.1 Put the gasket (C) on the mounting plate (K).

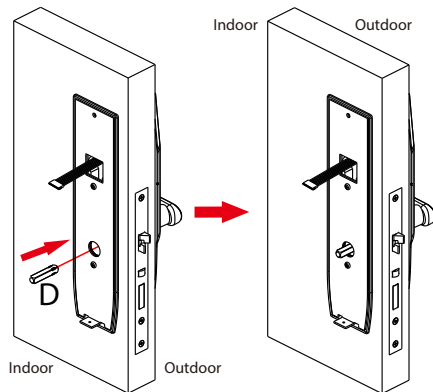


6.2 Inserting screws (L) to secure the outdoor unit (B).



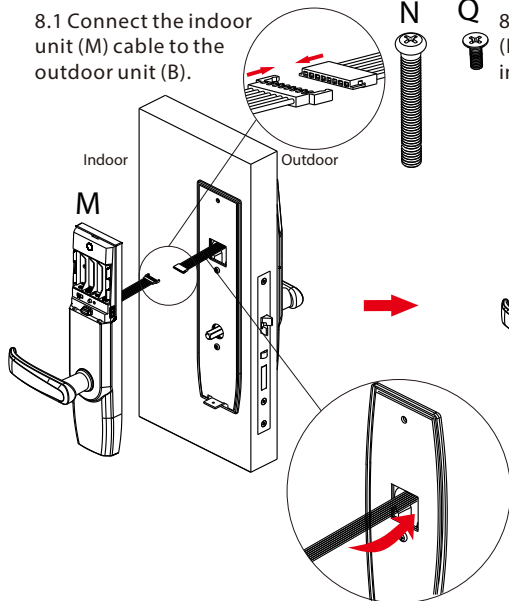
7. Install spindle (D) on the door.

7.1 Inserting the spindle (D) to the clutch.



8. Install indoor unit (M).

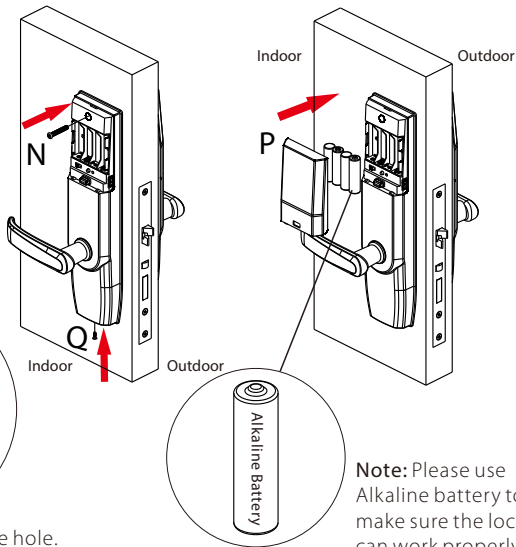
8.1 Connect the indoor unit (M) cable to the outdoor unit (B).



Note: Push cable into the hole.

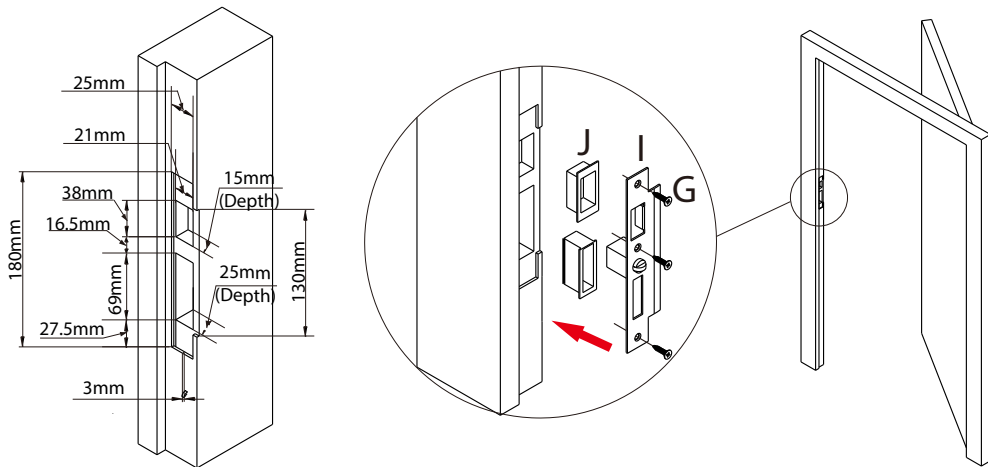
9. Install the battery.

8.2 Inserting the screws (N) (Q) to Secure the indoor unit (M).

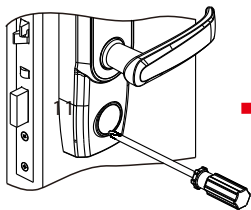


Note: Please use Alkaline battery to make sure the lock can work properly.

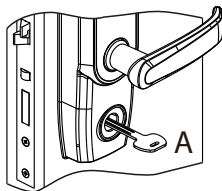
10. Mark and drill holes for striking.



11. Test the lock by mechanical key(A) or registered fingerprint.

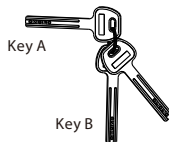
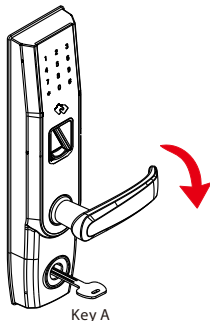


Remove the cover on the key hole with screwdriver or nails.



Insert the key into key hole and rotate 90°.

Note: AB key system is available by contacting sales.



AB Mechanical Key Instruction:

1. Key A is coated with brass color, which is used only for lock installer and upfitter.
2. Key B is packed in the sealed plastic wrap for safety, which is used for house owner.
3. Once Key B is used, Key A will be disabled to open the lock.

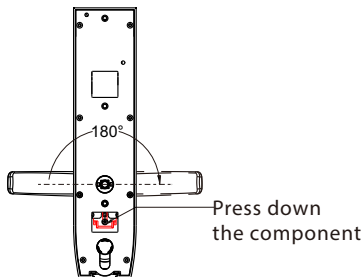
Cautions

1. The default setting of the device allows ANY fingerprint to unlock.
2. Please register at least one administrator for the newly installed lock. Without administrator, no registration for any normal user is allowed.
3. The lock is equipped with mechanical keys for manually unlocking. Please keep the mechanical keys in a safe place.
4. To power on the lock, four alkaline AA batteries (not included) are required. Non-alkaline and rechargeable batteries ARE NOT RECOMMENDED.
5. Do not remove batteries when the lock is in working state.
6. Please replace the battery soon when the lock prompts the voice of low battery.
7. If there is no activity performed on the lock for 10 seconds the fingerprint sensor will go to sleep.
8. For best results, apply clean fingers to the fingerprint sensor.

Tips

How to change the handle direction?

Press down the component pointed by the arrow.
At the same time, rotate the handle at 180°.
Then release your hand from the pressed component.



ZK Building, Wuhe Road, Gangtou, Bantian, Buji Town,
Longgang District, Shenzhen China 518129
Tel: +86 755-89602345
Fax: +86 755-89602394
www.zkteco.com

