

ProCapture-T

Fingerprint Access Control Terminal



ProCapture-T is an access control terminal applying the most advanced Z-ID fingerprint sensor. Its outstanding performance provides a high identification rate towards dry, wet and rough fingers, being capable to detect alive finger for a higher security level.

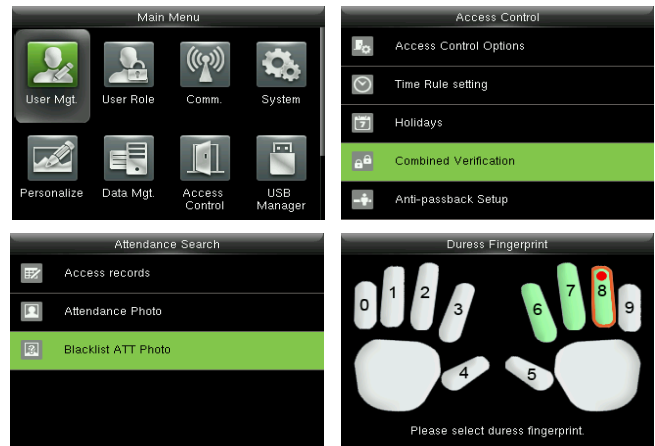
The fingerprint verification speed has been dramatically increased by its optimized fingerprint algorithm and the brand new ZMM220 hardware platform, equipped with a fast 1.2GHz processor.

The touch keypad delivers a smooth and easy user operation to enroll and delete users, set device and access control parameters, etc.

Its built-in camera allows to capture user's photos and events snapshots to provide attendance evidence (optional function).

Features

- Modern Design & Interactive UI
- Revolutionary Z-ID Fingerprint Sensor
- Multiple Verification Modes:
Fingerprint / Card / Password
- Outstanding Performance With Dry, Wet and Rough Fingers
- Built In Camera
* Event Snapshot
* User Photo (Optional)



Specifications (G: GL Exclusive Feature)

Capacity

Fingerprint	6,000
Card	10,000
Transaction	100,000
User Photo	3,000
Event Photo	7,000

Communication

- G TCP/IP
- G RS485 (For Slave Reader)
- USB Host
- Wiegand Input / Output
- Security Relay Box

Access Control Interface

- Lock Relay Output
- Alarm Output / Auxiliary Input
- Exit Button / Door Sensor
- Doorbell Output

Hardware

- G 1.2GHz High Speed CPU
- G Memory 128MB RAM / 256MB Flash
- Z-ID Fingerprint Sensor
- 2.4 Inches TFT-LCD Screen
- 125KHz EM Reader / IC Reader (Optional)
- Hi-Fi Voice & Indicator
- Tamper Switch Alarm
- G Touch Keypad
- G 120° Wide Angle Camera

Standard Functions

- Access Levels / Groups / Holidays
- DST / Bell Schedule
- Duress Mode
- Anti-Passback
- Record Query
- Custom Wallpaper & Screen Saver

Special Functions

- G Multiple Verification Modes
- G Alive Finger Detection
- G Event Snapshot
- User Photo (Optional)
- ZK Encrypted Card (Optional)
- G Fingerprint Card

Compatibility

- Wiegand Slave Reader
- G RS485 FP Slave Reader
- ZKBioSecurity Software

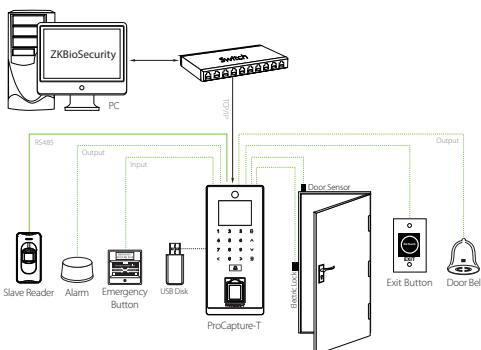
Additional Info

- Working Temperature: -10 °C ~ 50 °C
- Dimensions: 195.5 × 87 × 35 mm.
- Fingerprint Algorithm ZKFinger v1.0.0
- Fingerprint: FAR≤0.0001% FRR≤0.01%
- Package Includes 12V 3A Power Supply

Power

- Operating Voltage 12V DC
- Current Draw < 500mA

Configuration



Dimensions (mm)

