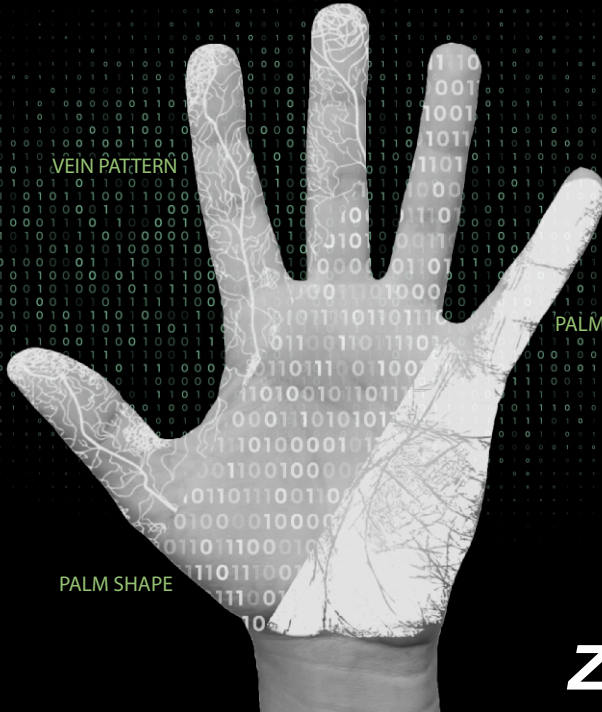


3-IN-1

PALM VERIFICATION



VEIN PATTERN

PALM PRINT

PALM SHAPE

ZKTECO



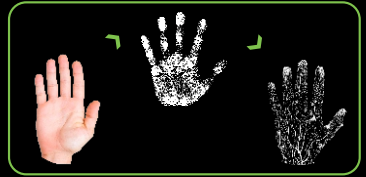
Introduction

The newest generation of palm recognition technology combines palm, palm print and palm vein recognition as one. Benefitted from the advancement of computer vision technology. Recognition performance is now in a higher speed, wider angle tolerance and better anti-spoofing ability.

Technology Features

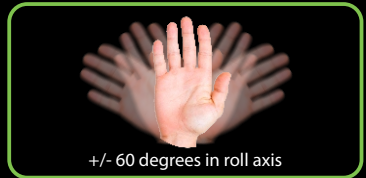
Anti-Spoofing Technology

Anti-spoofing technology is a must when deploying biometrics for identity verification. Our biometric systems protect your company from hackers by ensuring the presence of live detection. The ability to detect spoofing has been substantially improved by ensuring triple protection of palm shape, palm print and palm vein verification.



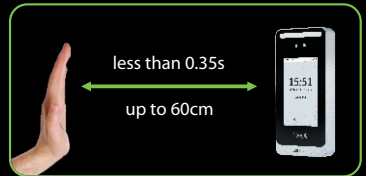
Wide Angle Tolerance

Our palm verification system is created using Deep Learning and Computer Vision Technology. The CNN method was used to conduct analysis of thousands of palm enrolments onto our devices to fully comprehend how the palm looks from various angles.



Ultra-long Recognition Distance

The bloom of HD image sensor and infrared technology in recent years has guaranteed users a clear palm shape, palm print and palm vein image in the range of 10-60cm. The verification process can be completed within less than 0.35s, which is absolutely one of the finest in the industry.



Recognition Process

When a palm approaches the camera the camera first performs the palm identification procedure to determine whether the object is a palm; if not, it will halt further recognition. The objects will go on to the following phase if it is a palm.



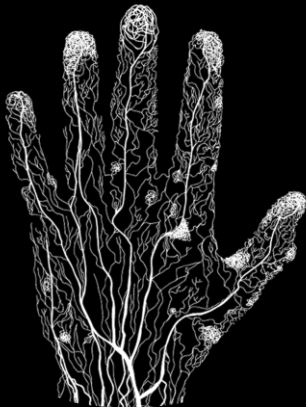
Recognition Process

The infrared camera will be engaged following the palm recognition procedure and after concurrently processing palm print and vein recognition, it will identify the feature point of the palm print and cross-reference it with the database.



Recognition Process

While the infrared camera will utilize infrared light to watch the palm vein, which is generally unobservable by the human sight, and will detect the feature point of the palm vein and then cross-check it's availability with the database.



ZKT_{ECO}



PALM VERIFICATION DEVICES

VIEW NOW



www.zkteco.co.za