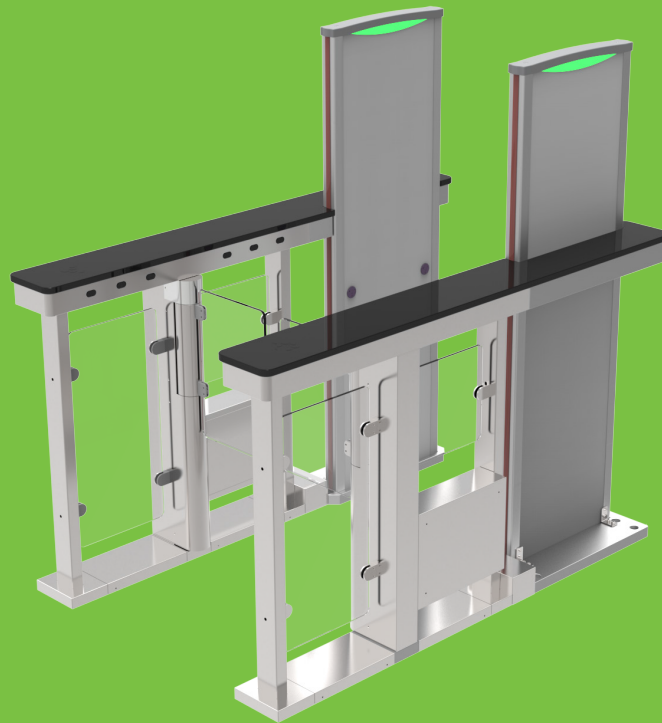


# MST150

## Metal Detection Integrated Turnstile



MST150, the innovative turnstile product of ZKTeco, is designed with built-in metal detector which enhances security level and greatly boosts the efficiency of security check. By combining inspection and access control, manpower can also be saved up. It is applicable to the entrance of factory, station, school and building that needs security inspection management.

### Features

- Integrated design of metal detector and turnstile.
- No overhead module design.
- Simple structure and configuration, easy to maintain.
- 15 detection zones, sensitivity is adjustable for each zone.
- Built-in LED display, easy to configure.
- Audio/visual alarms and passing indicators.
- Servomotor with high transmission efficiency and control precision.
- Anti-pinch and Anti-tailgating.

# Specifications

Detection Zones	15 zones
Sensitivity	100 levels
Frequency Channel	12
Alarm Relay	1-3 s
Open Duration	0.8s (adjustable)
Delay Close	0-5s
Throughput Speed	Maximum 30/minute
Movement	Swing
Infrared Sensor	8 pairs
Lid Material	Tempered glass
Weight	232kg (with package)
External Dimensions(mm)	1620 (H)*1100 (D)*1700 (L)
Channel Dimensions(mm)	1620 (H)*720 (D)*1700 (L)

Work Frequency	4KH-8KH
Working Environment	Indoor
Working Temperature	-28°C ~ +50°C
Working Humidity	20%-95% (non-condensing)
Input Voltage	100 ~240V, 50/60Hz

# Applications



Factory



School



Station



Government Office

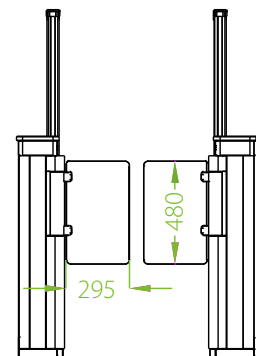
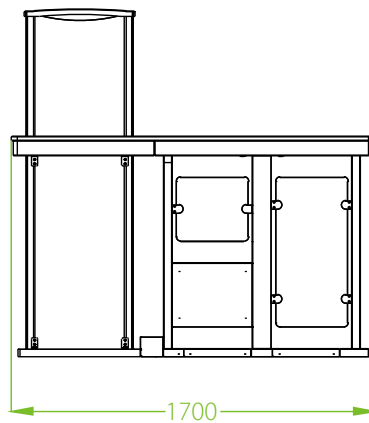
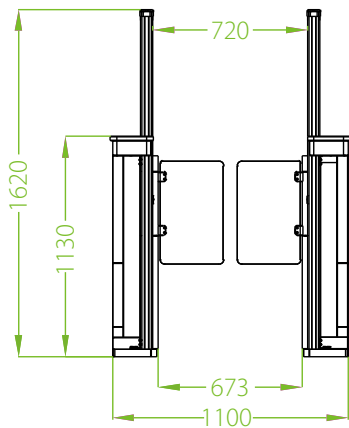


Museum



Exhibition

# Dimensions



V1.1 2019.06.21