



# Horus

## Wireless Facial Recognition Time Attendance Terminal

The trend of Visible Light Facial Recognition technology have brought user experience of biometric technology to a new height. As one of the biometric industry leaders, ZKTeco launched the second-generation facial recognition terminal—Horus series, named after an Egyptian god, who has the legendary “all-seeing eye” that can clearly observe everything. Horus is one of the most advanced time and attendance terminal existing in the market, with incredibly compact size (almost the same size as iPhone XS max) and powerful facial recognition technology offering up to 3 meters recognition distance,  $\pm 30$  degree pose angle tolerance, high anti-spoof ability, support on plentiful communication protocols (Wi-Fi, 3G, 4G, Bluetooth) and worldwide network setting, optional fingerprint and RFID card modules, up to 10,000 facial templates capacity, and is compatible with the all-in-one security & time attendance platform ZKBioSecurity and BioTime.

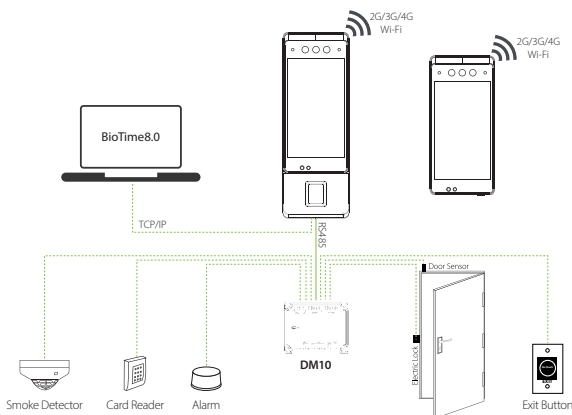
### Features

- New height of facial recognition template capacity up to 1: N-10,000 facial templates.
- Anti-spoofing algorithm against print attack (laser, color and B / W photos), videos attack, and 3D mask attack.
- Supports multiple communication protocols: 4G, Wi-Fi, Bluetooth and USB-C.
- 5-inch smartphone grade IPS touch LCD monitor
- Extensive Fingerprint, RFID and TCP / IP communication modules available.
- Extra-large 2MP CMOS with WDR function
- Various further development options: embedded GPS / A-GPS, microphone and PIR sensor

# Specifications

	Horus E1	Horus E1-RFID	Horus E1-FP
Picture			
CPU	Quad-core, 1.5GHz		
Android Version	Android 8.1		
Memory	RAM 2GB / ROM 16GB		
Camera	2MP Dual Camera		
LCD	720*1280, IPS touch LCD		
Verification Mode	Face	Face + RFID	Face + Fingerprint + RFID
Face Capacity	6,000 / 10,000 (optional)		
Fingerprint Capacity	N / A	N / A	6,000 / 10,000 (Optional)
ID Card	N / A	MF & Desfire Optional	
Access Control	N / A	Only With DM10 Module <b>**Sold Separatly**</b>	
TCP/IP	N / A	10 / 100 Mbps	
Wi-Fi	2.4GHz, 5GHz, 802.11a / b / g / n		
Bluetooth	4.0		
4G Wireless Broadband	GSM: 850 / 900 / 1800 / 1900 WCDMA: 850 / 900 / 1700 / 1900 / 2100 TDD-LTE: B38 / B40 / B41M FDD-LTE: B1 / B2 / B3 / B4 / B5 / B7 / B8 / B12 / B17 / B20 / B28A / B28B'		
GPS	GPS / A-GPS		
Speaker	90DB (10cm distance)		
Microphone	1m clear voice pickup		
Dimensions	158 * 74 * 15.6mm	205.33 * 74 * 17.7 mm	
Power	12V 2A		
Operating Temperature	-10°C — 50°C		
Operating Humidity	20% — 80%RH		
Certifications	CE, FCC, RoHS		

## Configuration



## Dimensions (mm)

