

# ZK-LPR Car ID

## License Plate Recognition Camera



**ZK-LPR Car ID is based on BL-852Q38A-LP, ZKTeco's high-performance camera with embedded License Plate Recognition application.**

The license plate recognition algorithm is executed inside the camera avoiding the use of computers in access control, tolling and weighing scenarios. The License Plate Recognition engine can identify license plates from over 80 countries around the world.

ZK-LPR Car ID is next step in ZKTeco's access control system technology for an efficient and simple vehicle access management, delivering, faster & easier set-up and allowing customers to achieve high performance with lower installation, maintenance and off-site programming costs.



Allows integration with server / cloud based solutions



LPR software embedded in the camera



Access lists for multiple events configuration



Scalable solution with primary / secondary cameras



OCR conversion directly in the camera



Supports 3rd party integration (Milestone and Lenel)



Identifies plates from more than 80 countries



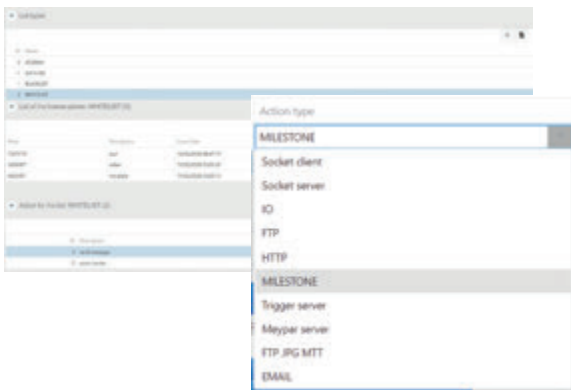
## Live View

ZK-LPR Car ID allows real-time monitoring of alphanumeric license plates captured by the camera, issuing reports with plate recognition data. Optimized memory storage available.

## Monitor and review license plate recognition history data

The licences plate recognition history data can be stored for retrieval and review. Different filters can be enabled for this purpose, such as: Date, time, country of origin.

ID	Timestamp	Plate	Line	Conf.	Country	City	Image	Image
61146	11:14:53.191 21/02/2020	4862FV5		99.90	Spain			LPR
61147	11:15:18.263 21/02/2020	894909P		99.90	Spain			LPR
61148	11:15:27.177 21/02/2020	043200V		85.01	Spain			LPR
61149	11:15:30.812 21/02/2020	46978KL		99.90	Spain			LPR
61150	11:15:42.473 21/02/2020	469430M		98.91	Spain			LPR



## Configure lists and linkage actions

The system allows to create an unlimited number of event lists and assign different actions like, for example, opening/closing barriers sending a signal via HTTP or simple integrations with 3rd party companies like Milestone or Lenel. All linkages can be activated by limited time periods and lists can be exported or imported from other devices.

## LPR Configuration

The system supports plate detection from different regions and countries. Country license plate detection is configurable as well as the performance of the camera according to the environment.

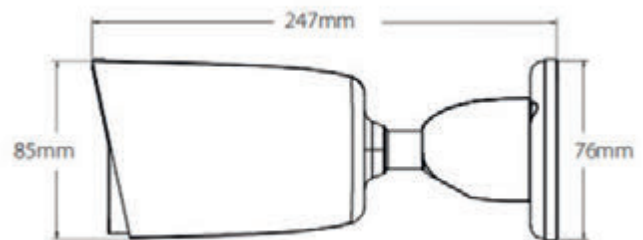




## Recognition features

- 98% or bigger reliability rating on LPR
- Recognition of 2-line vehicle plates
- Duplicated license plate filtering
- Access Control Linkage with ZKTeco Parking barriers
- LPR from vehicles in movement (up to 20 km/h) or stopped (Stop & Go).

## Dimensions



## Supported Countries

Spain	Netherlands	Austria	Brazil	Costa Rica	Vietnam	Abu Dhabi	Nigeria
Portugal	Estonia	Slovenia	Argentina	Dominican Republic	Indonesia	Dubai	Uganda
France	Bosnia and Herzegovina	Hungary	Mexico	Honduras	Philippines	Azerbaijan	Burkina Faso
Italy	Romania	Czech Republic	Ecuador	Nicaragua	Malaysia	Kuwait	Tanzania
United Kingdom	Belgium	Belarus	Venezuela	Bermuda	Singapore	Qatar	Kenya
Greece	Norway	Ukraine	Peru	Trinidad and Tobago	Israel	Saudi Arabia	Botswana
Ireland (ROI)	Denmark	Croatia	El Salvador	Tobago	Lebanon	Oman	Ghana
Germany	Sweden	Lithuania	Bolivia	Barbados	Hong-Kong	South Africa	Cameroon
Andorra	Finland	Latvia	Uruguay	Jamaica	Macau	Morocco	EEUU
Poland	Gibraltar	Chile	Guatemala	Russia	India	Tunisia	Canada
Bulgaria	Switzerland	Colombia	Panama	Turkey	Taiwan	Angola	Australia
			Paraguay		Bahrain	Senegal	New Zealand

## Specifications

Camera			
Model	BL-852Q38A-LP	Flash	512 Mb
Image Sensor	1/2.8" Sony STAVIS CMOS	IR LED No.	2 (Smart IR)
Effective Pixels	1920* 1080	IR Distance	50m
Min. Illumination	Color: 0.001Lux@F1.7 (AGC ON)	S/N Ratio	> 52dB

Lens			
Lens Type	Motorized	Aperture	F1.7 ~ F3.0
Mount Type	Board-in	FOV	38° ~ 107°
Focal Length	3.35mm ~ 10.05mm	Optical Zoom	3X

Video			
Compression	H.265+/H.265/H.264	WDR	TWDR
Resolution	1080P(1920*1080)/1.3MP(1280*960)/720P(1280*720) Q720P(640*360)/CIF(352*288)	Day/Night	Support
Bitrate Control	CBR/VBR	White Balance	Support
Bitrate	H.265+:1536Kbps-7Mbps H.265:1536Kbps-7Mbps H.264:1792Kbps-9Mbps	Defog	Support
Multi-Streaming	Main Stream:1080P@25fps	Noise Reduction	3D DNR
	Sub Stream: Q720P@25fps	Mirror/Flip	Support
	N/A	Corridor Mode	Support
Motion Detection	Support	HLC	Support
Digital Zoom	Support	BLC	N/A
Audio Compression	G7.11u	ROI	4 areas
Privacy Mask	5 areas	Anti-flicker	Support

Network			
Protocol	TCP/IP, UDP, HTTP, DHCP, RTSP, DDNS, NTP, PPPoE, UPnP, SMTP	Management Software(VMS)	AntarVis 2.0
Interoperability	ONVIF, SDK, API	Operation System	Windows
Max. Online Users	5	Mobile APP	AntarView Pro
Web Browser	IE/Firefox/Chrome/Safari	P2P Cloud Service	Support

Interface			
Ethernet	1 RJ-45 port (10/100Mbps)	Reset Button	Support
Audio I/O	1 in / 1 out	Micro-SD Slot	64GB MicroSD card included
Alarm I/O	2 in / 1 out	ANR	Support
RS485	Support	USB	N/A

General			
Power Supply	PoE (IEEE802.3af), DC 12V±10%	Working Humidity	10% ~ 90%
Power Consumption	< 3W	Working Temperature	-30°C ~ +60 °C
Ingress Protection	IP 67	Net Weight	0.50 kg
Dimensions	247(L)*85(W)*76(H)mm	Gross Weight	0.64 kg