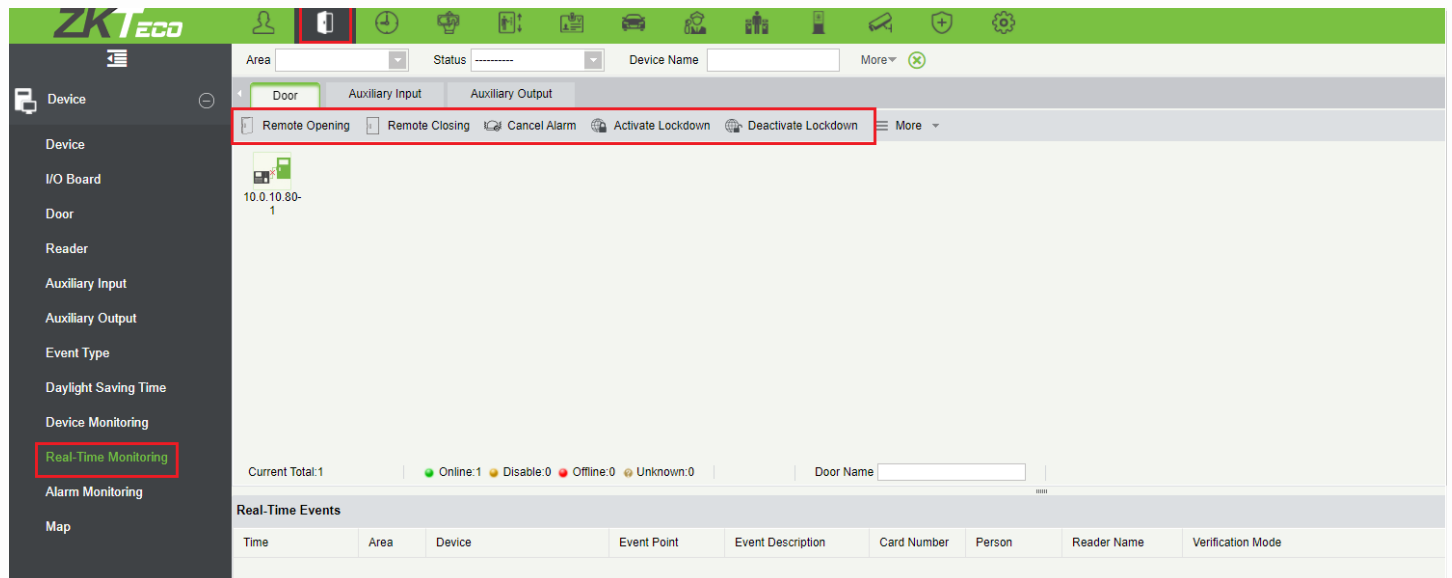


ZKBioSecurity – Real-Time Monitoring

It will monitor the status and real-time events of doors under the access control panels in the system in real-time, including normal events and abnormal events (including alarm events).

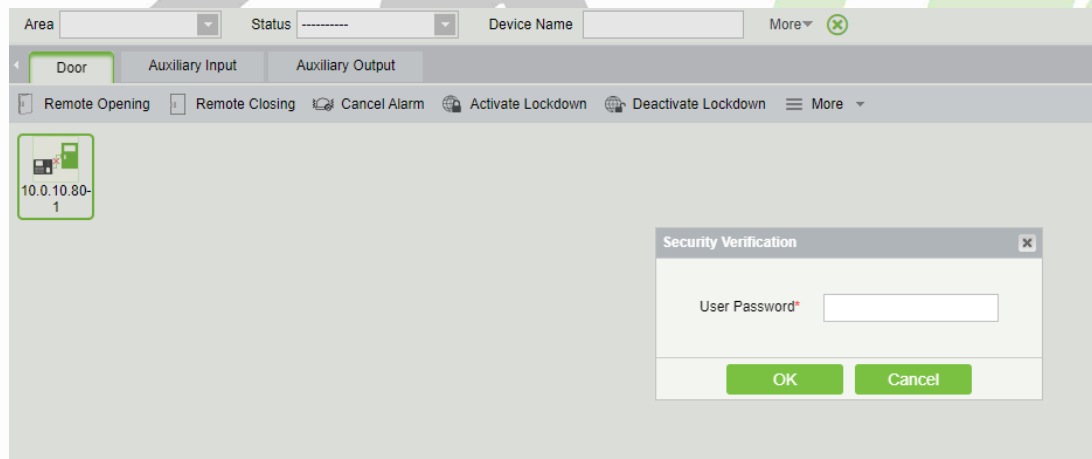
Following are steps to take when to do Real-Time Monitoring.

Device > Device > Device Monitoring

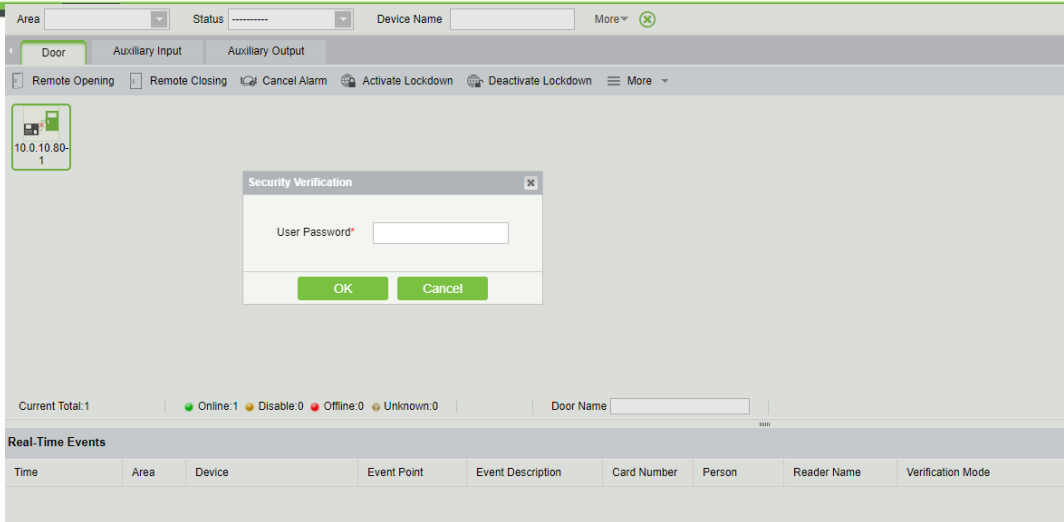


Remote Opening/Closing: It can control one door or all doors.

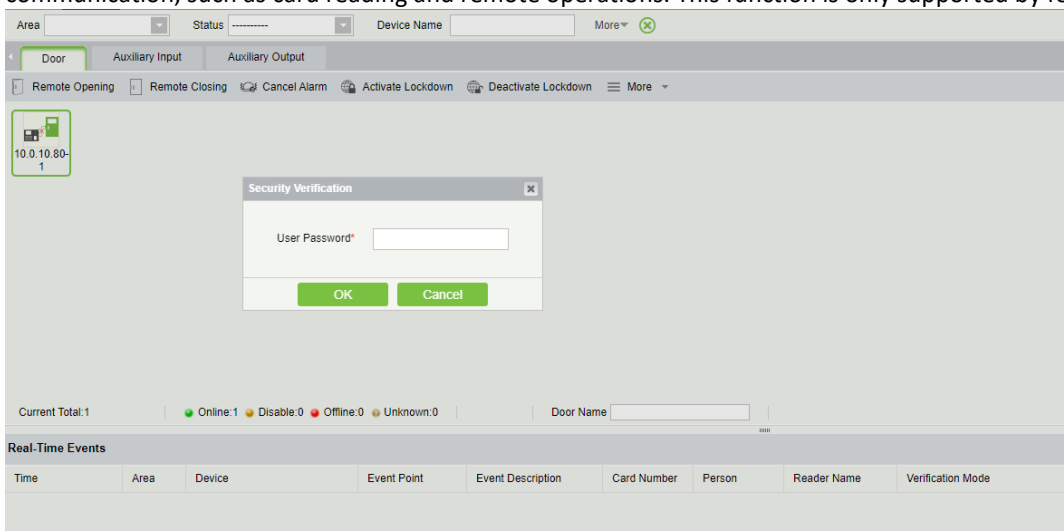
Select the Door, by click on the door and click on remote open/Closing.



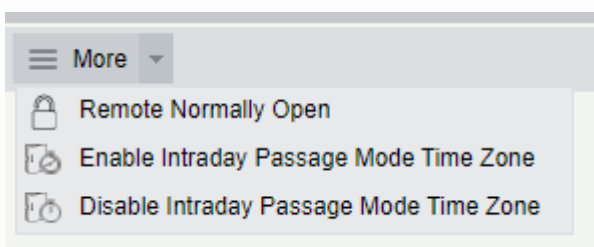
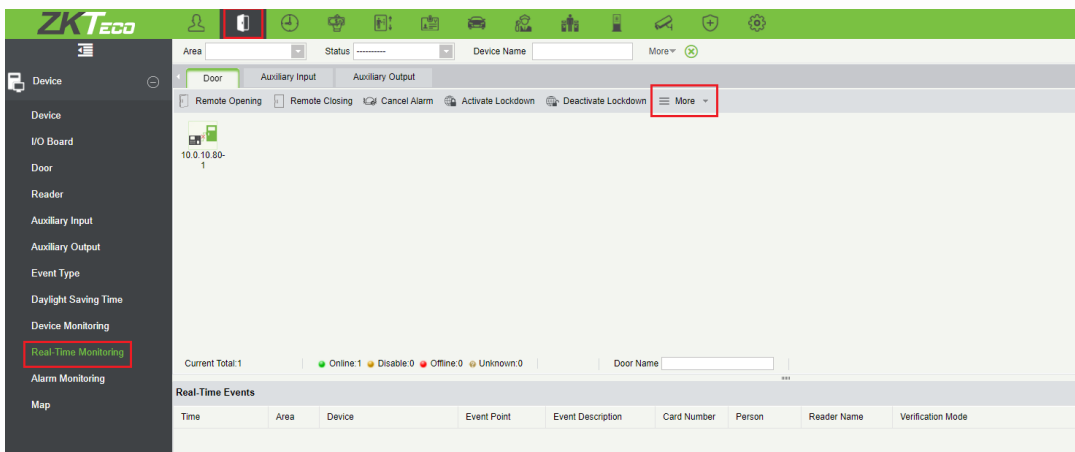
Cancel the alarm: When the alarm door is displayed on Real-Time Monitoring, the alarm sound will be played. NB. When you cancel the Alarm, please check that all your doors are still connected.



Activate/Deactivate Lockdown: It will remotely change the door status to locked status. After this, the door wouldn't receive any communication, such as card reading and remote operations. This function is only supported by few devices.



More:

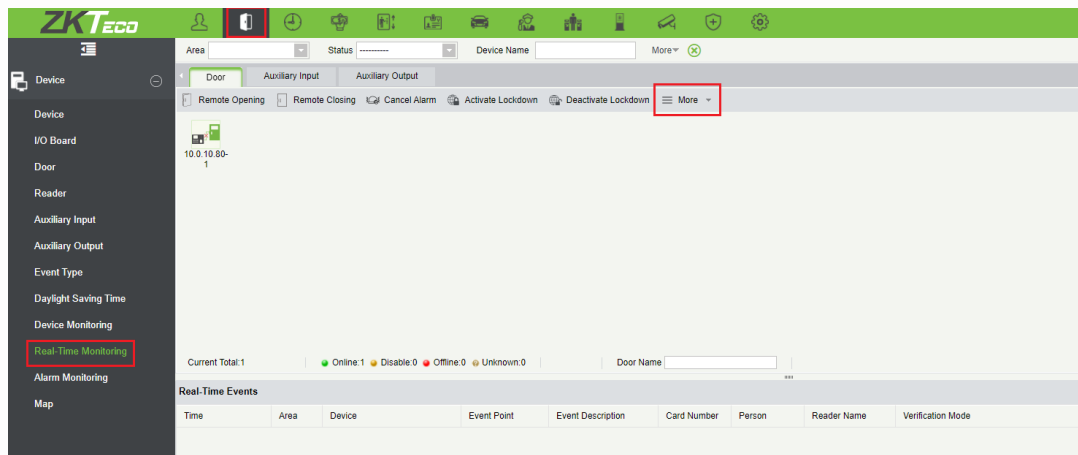


Remote Normally Open: It will set the device as normal open by remote

When you **Enable Intraday Passage Mode Time Zone** you set the door to Normal Open, then the door will not be limited to any time zones (open for 24 hours). The door will stay open.











When you **Disable Intraday Passage Mode Time Zone** the door will work on its normal time zone and access levels.

NB. When you cancel the Alarm, please check that all your doors are still connected.



Different icons represent status as followed:

Icons	Status	Icons	Status
	Device banned		Door Offline
	Door sensor unset, Relay closed /Without relay status		Door sensor unset, Relay opened/Without relay status
	Online status Door closed, Relay closed/Without relay status		Online status Door closed, Relay opened/Without relay status
	Online status Door opened, Relay closed/Without relay status		Online status Door opened, Relay opened/Without relay status
	Door opened alarming, Relay closed		Door opened alarming, Relay opened
	Door opening timeout, Relay closed /Without relay status, Door Sensor Opened		Door opening timeout, Relay opened/Without relay status

	Door opening timeout, Relay closed /Without relay status, Door Sensor Opened		Door opening timeout, Relay opened/Without relay status
	Door opening timeout, Relay closed/ Door Sensor Closed		Door opening timeout, Relay opened/ Door Sensor Closed
	Door closed alarming, Relay closed/Without relay status		Door closed alarming, Relay opened/Without relay status
	Door sensor unset, Door alarming, Relay closed		Door sensor unset, Door alarming, Relay opened
	Door opening timeout, Without relay status/Door Sensor Closed		Door locking

