

ZKBiosecurity - Adding a Device

Following are steps to take when you add a Device

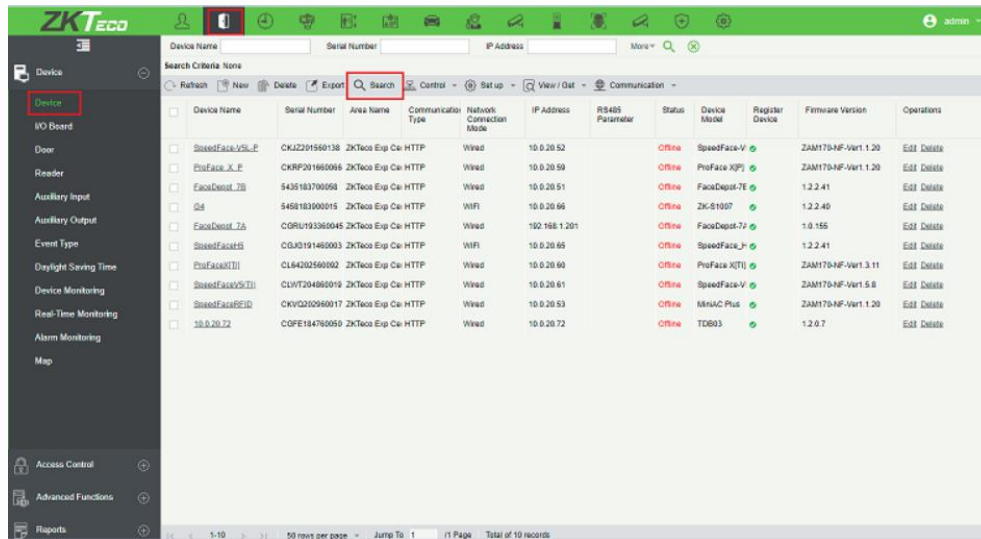
Adding Device Manually

Only use this with Pull devices and we don't sell Pull devices on ZKBiosecurity

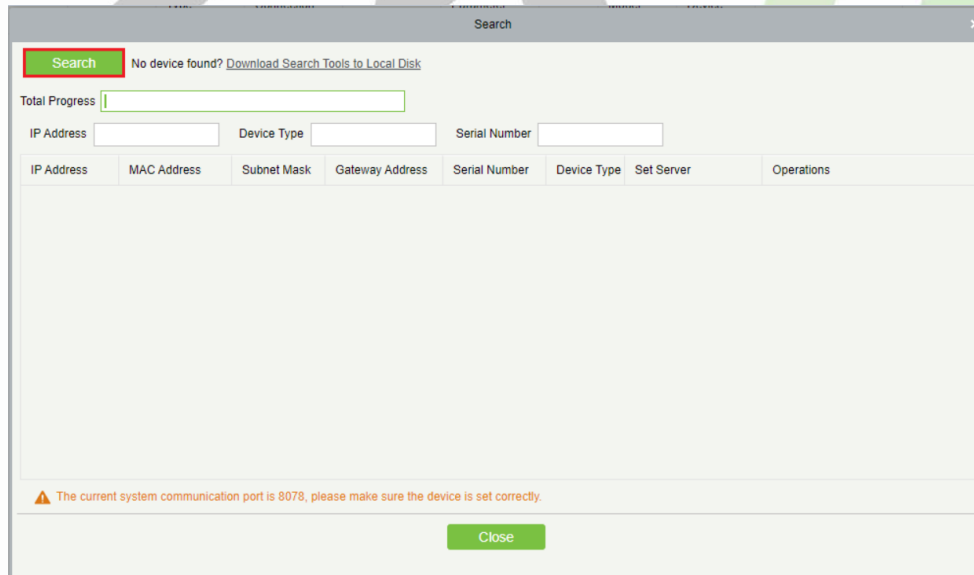
Search for Device

Device > Device > Device

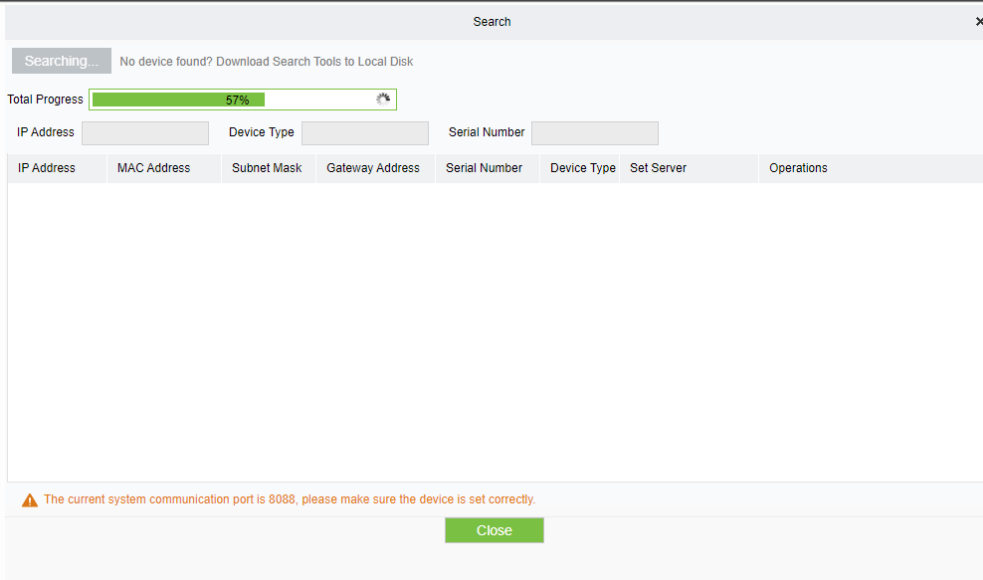
Click on Search



Select the Search Button



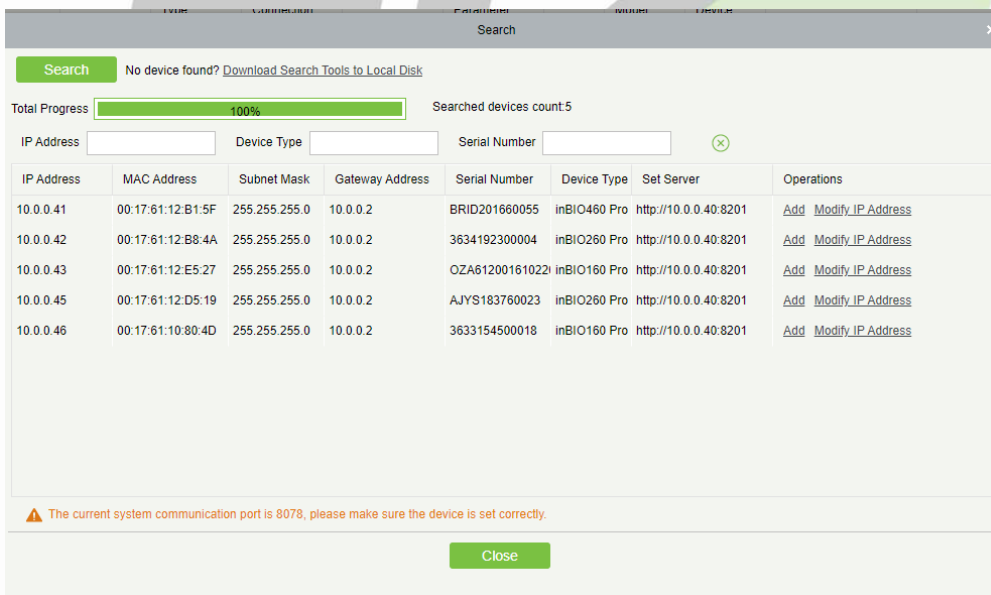
The process bar will show you how long the search button will take.



All the device will show that are connected to the same network as the servicer. To set up the network please see the Communication settings document.

If you need to configure your controller, please use the download search tool to the local disk. Please see the Download Communication Setting tool document.

Select ADD to add the device to the software.



Select ADD

Search
No device found? [Download Search Tools to Local Disk](#)

Total Progress 100% Searched devices count 6

IP Address Device Type Serial Number

IP Address	MAC Address	Subnet Mask	Gateway Address	Serial Number	Device Type	Set Server	Operations
10.0.0.41	00:17:61:12:B1:5F	255.255.255.0	10.0.0.2	BRID201660055	inBIO460 Pro	http://10.0.0.40:8201	Add Modify IP Address
10.0.0.42	00:17:61:12:B8:4A	255.255.255.0	10.0.0.2	3634192300004	inBIO260 Pro	http://10.0.0.40:8201	Add Modify IP Address
10.0.0.43	00:17:61:12:E5:27	255.255.255.0	10.0.0.2	OZA61200161022	inBIO160 Pro	http://10.0.0.40:8201	Add Modify IP Address
10.0.0.45	00:17:61:12:D5:19	255.255.255.0	10.0.0.2	AJYS183760023	inBIO260 Pro	http://10.0.0.40:8201	Add Modify IP Address
10.0.0.46	00:17:61:10:80:4D	255.255.255.0	10.0.0.2	3633154500018	inBIO160 Pro	http://10.0.0.40:8201	Add Modify IP Address
10.0.10.80		255.255.255.0	10.0.10.2	CKJZ201560071	SpeedFace-V		Add

⚠ The current system communication port is 8078, please make sure the device is set correctly.

Close

Fill in all the Fields.

Add

Device Name*

Icon Type*

Area*

Add to Level

Clear Data in the Device when Adding

⚠ [Clear Data in the Device when Adding] will delete data in the device (except event record), please use with caution!

OK
Cancel

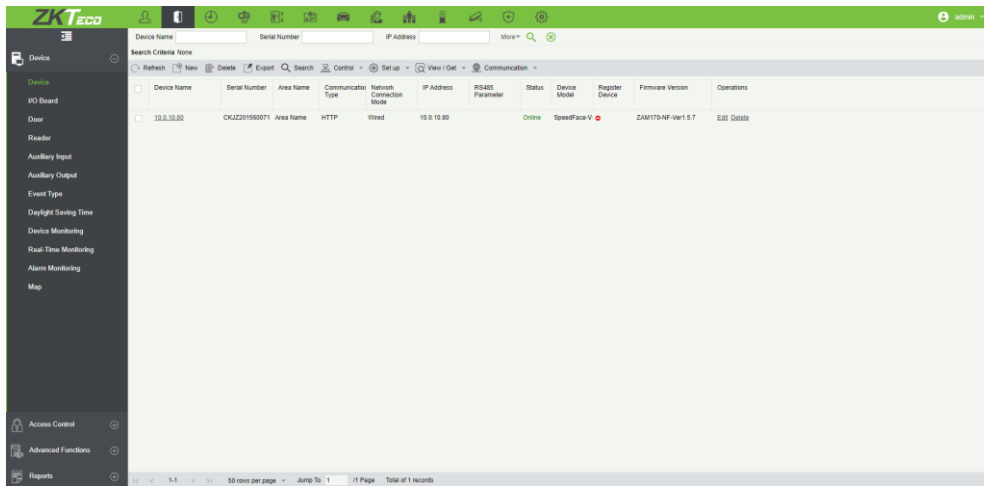
Area: Select specific areas of devices. After setting areas, devices can be filtered by areas upon Real-Time Monitoring. Please see Real-Time Monitoring Document.

Icon Type: The kind of device; Door, Parking barrier, Flap Barrier.

Add to Level: Automatically add the device to the selected level. The device cannot be automatically added to the selected level if the number of personnel exceeds 5000. You can add personnel after the device is successfully added. IF there is data on your device, don't link it to a level, you will lose all your data.

Clear Data in the device when Adding: The system will clear all data in the device (except the event logs).

Refresh your screen for your device to show.



The screenshot shows the ZKTeco software interface. On the left is a navigation menu with options like Device, IO Board, Door, Reader, etc. The main area displays a table with the following data:

Device Name	Serial Number	Area Name	Communication Type	Network Connection Mode	IP Address	RIS485 Firmware	Status	Device Model	Register Device	Firmware Version	Operations
10.0.10.80	CKJZ201550071	Area Name	HTTP	Wired	10.0.10.80		Online	SpeedFace-V		ZKM170-NF-Vier1.5.7	Edit Details

Your device is added.

