

ZKBioSecurity – Adding Device - Network Settings

Following are steps to take when setting up your Network

Step 1.

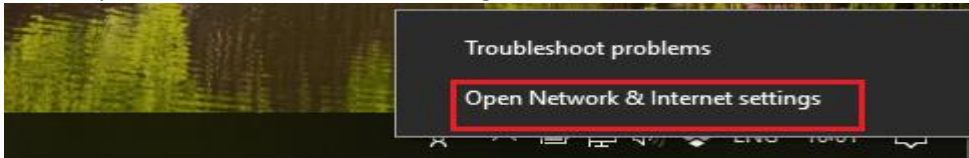
On the right-hand side of your Computer click on the Network Icon



Right-Click the Network Icon.

Step 2.

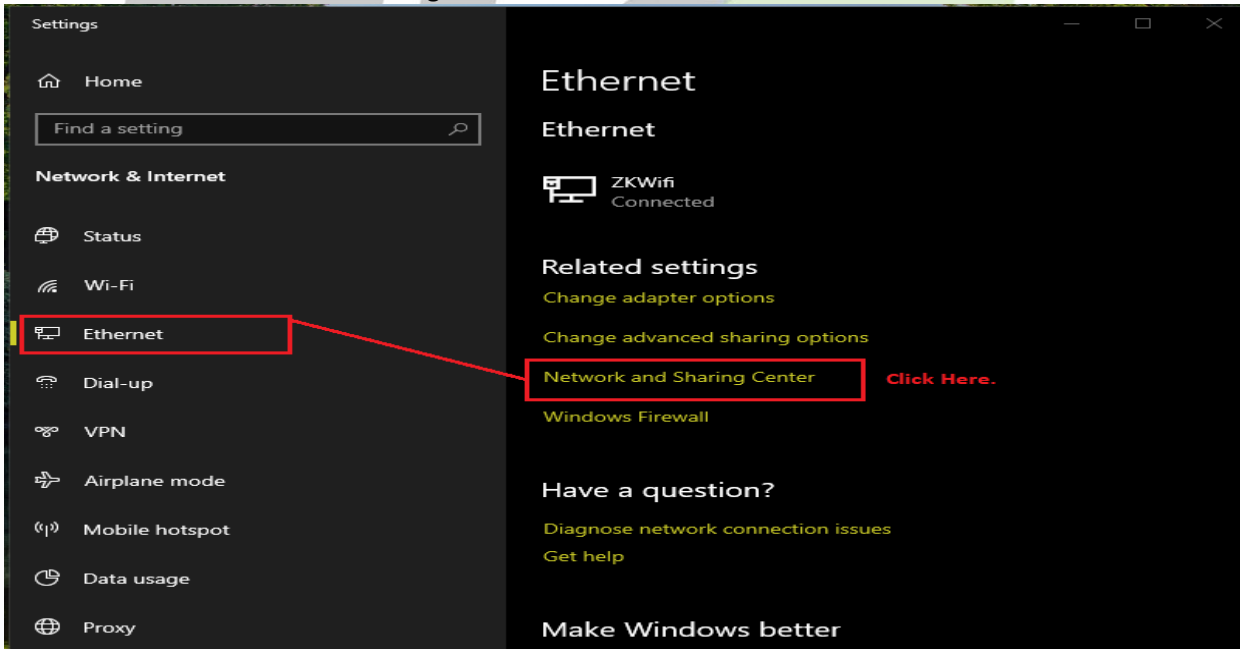
Select open network and internet settings



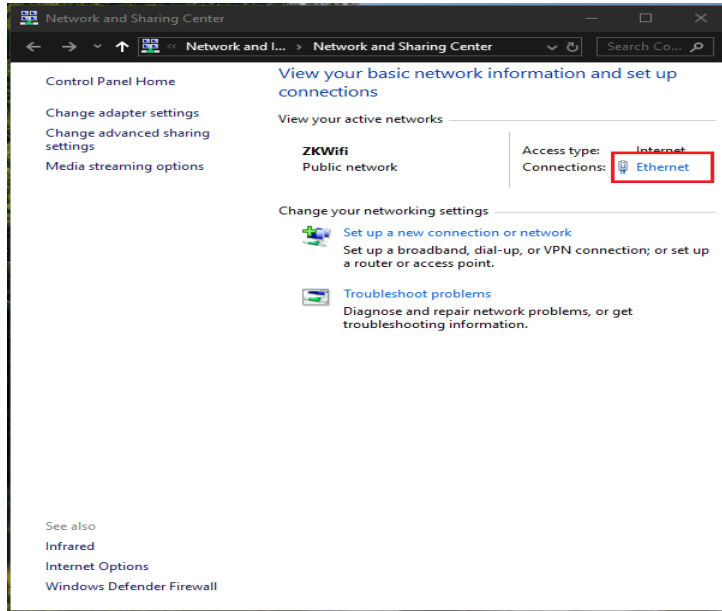
Click on the option.

Step 3.

Select Ethernet and network Sharing Centre

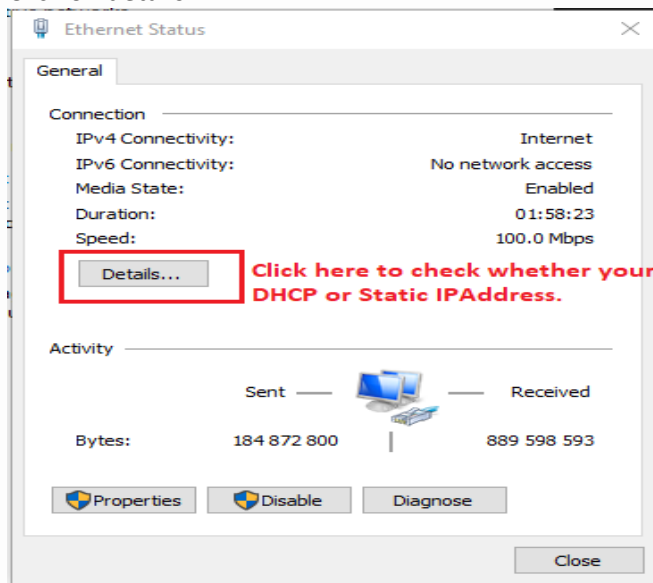


Step 4. Select Ethernet



Click on the Ethernet option.
NB: Do not use the WIFI.

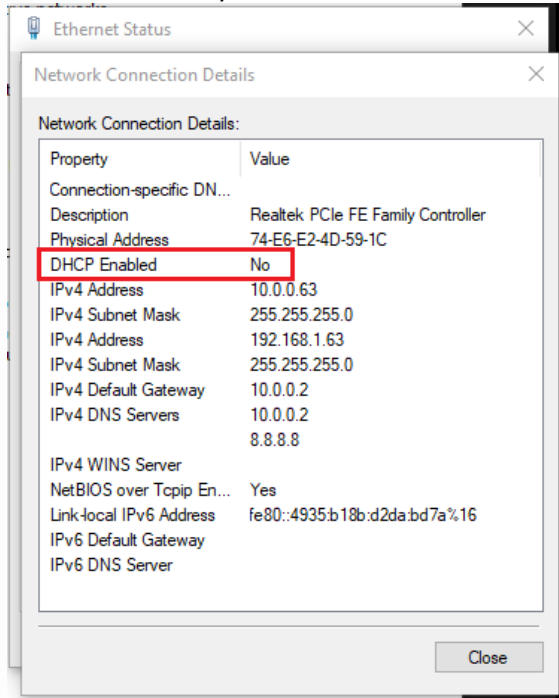
Step 5. Click on details



Click here to check whether your PC is on DHCP or Static IP Address.



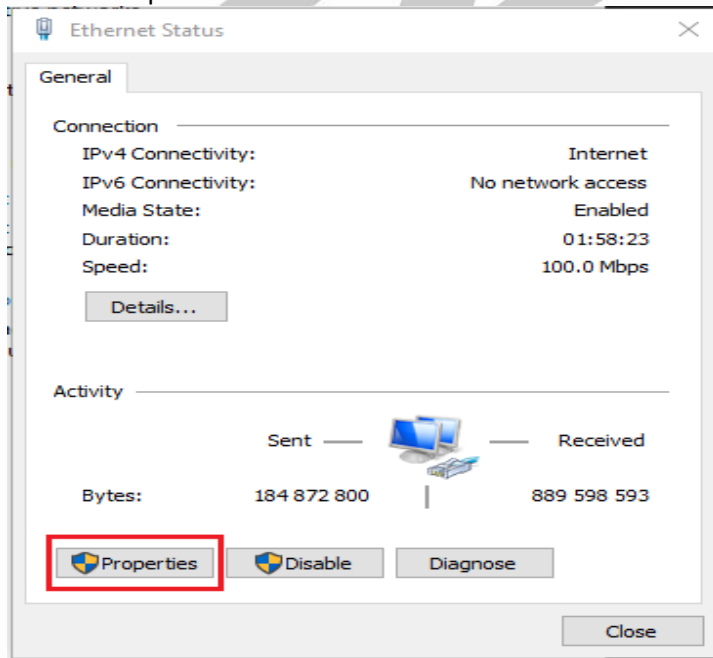
Step 6.
Your DHCP will say YES or NO.



If DHCP Enable = No
Which means your PC is on Static.

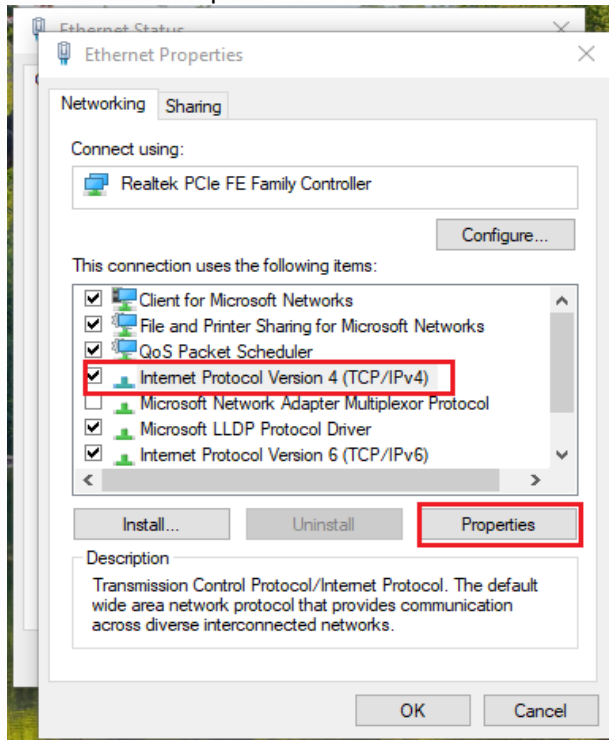
If DHCP Enable = Yes
Which means your PC is on DHCP.

Step 7.
Click on Properties



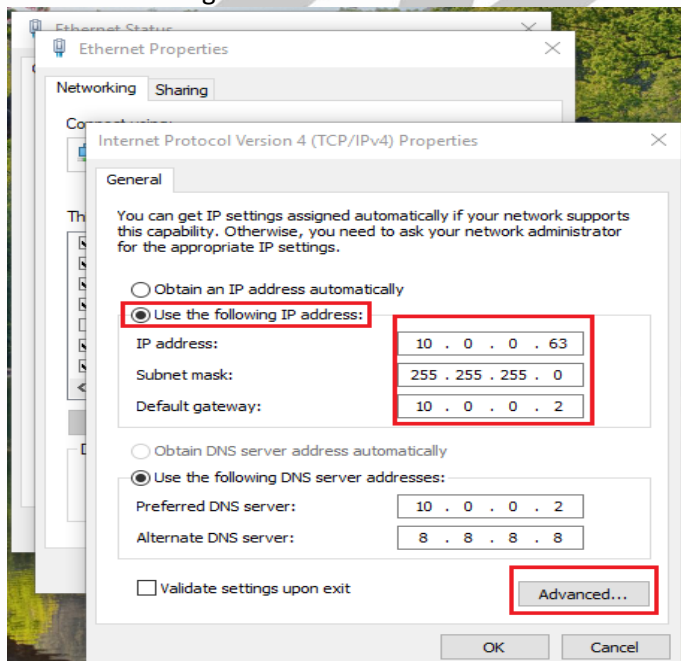
Click here if you want to change your PC IPAddress.

Step 8.
Click on internet protocol version 4



Click on (TCP/IPv4) then click on Properties.

Step 9.
Use the following IP Address.

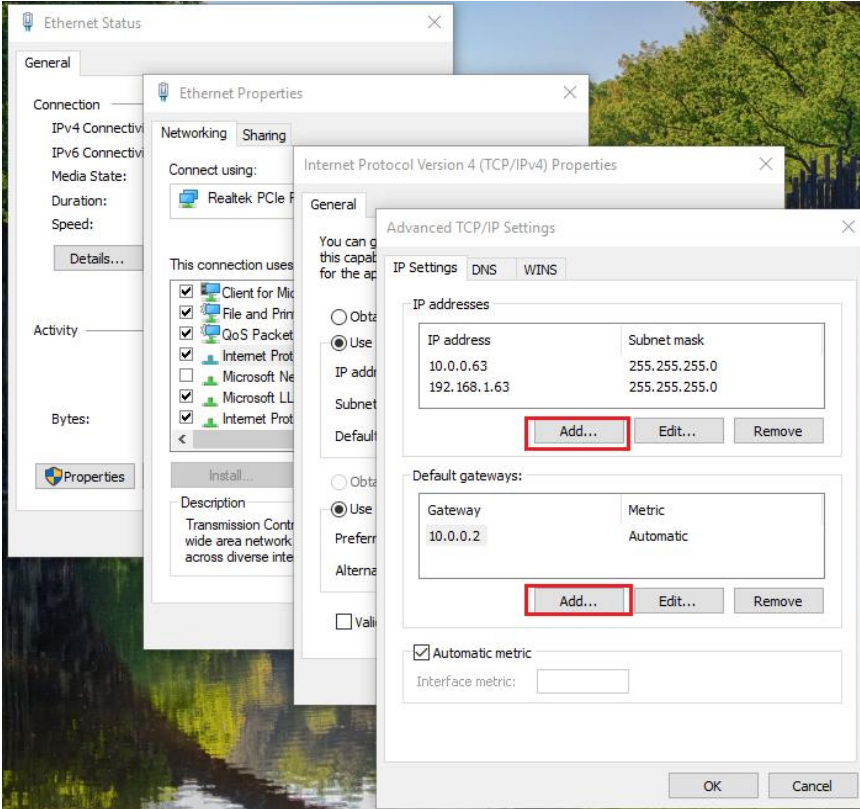


1. Select Use the following IP.
2. Give your PC an IPAddress that will be on the same IP range wit your devices.
3. You can click here to give your PC another IP range.

Click on Advance

Step 10.

Add your IP address and default gateways



1. You can add another IP.

2. You can add another Gateway.

click ok to finish.

Then click on OK and close all the tabs.

