

## Biotime 8 – Download and install Palm Driver

Following are steps to take when you need to install the Palm Driver for the palm Enroller.

Personnel > Employee > Employee

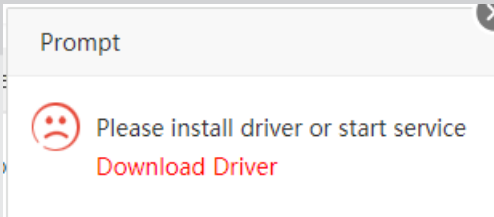
Click on Add

The screenshot shows the ZKTeco software interface with the 'Personnel' menu selected. The 'Add' button is highlighted in the top toolbar. Below, the 'Add' dialog box is open, showing the 'Profile' tab. The 'Employee ID' field is filled with '1000038'. The 'Hired Date' is set to '2021-08-03'. The 'Private Information' tab is also visible, showing fields for SSN, Local Name, Gender, Passport NO., Automobile License, Motorcycle License, Contact Tel, Office Tel, Mobile, National, Religion, City, Address, Postcode, and Email. The 'Confirm' and 'Cancel' buttons are at the bottom right.

Click on Device Access Settings Tab

Click on the enroll button of the Palm.

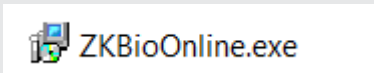
The screenshot shows the 'Device Access Settings' tab in the 'Add' dialog box. The 'Verify Mode' is set to 'Any'. The 'Device Privilege' is set to 'Employee'. The 'Palm Qty.' is set to 'v8' and the 'Enroll' button is highlighted with a red box. The 'Face Qty.' is set to 'v12' and the 'Enroll' button is also visible. The 'Bio-Photo' field is empty. The 'Confirm' and 'Cancel' buttons are at the bottom right.



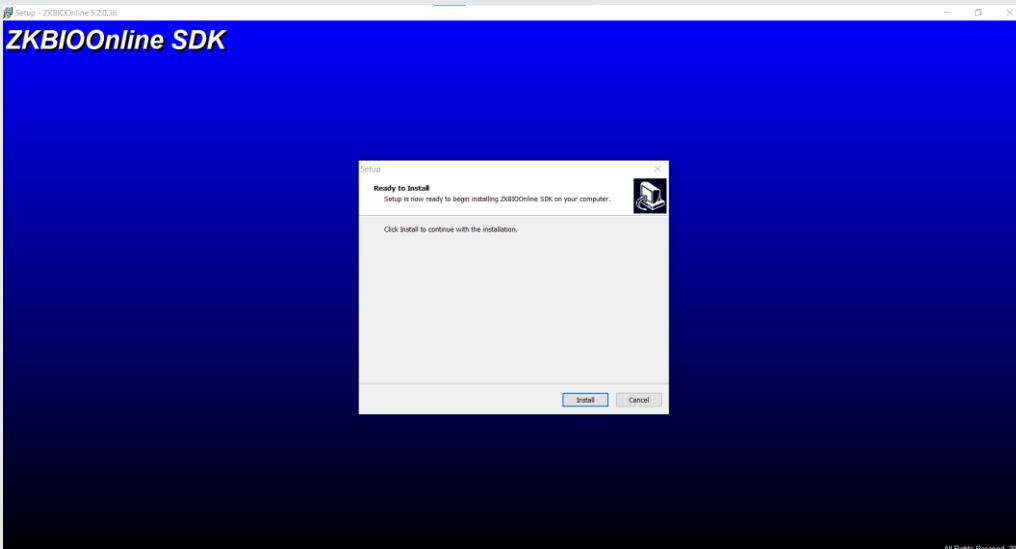
Click on Download Driver

The software will be downloaded to your download folder.

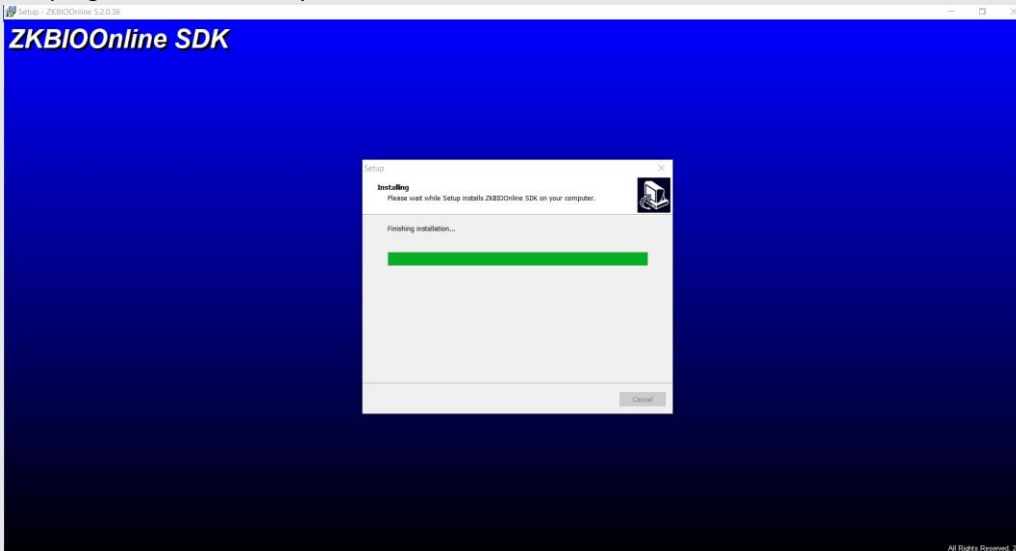
In your download folder double click on the software.



Click on Install



The progress bar will show you how far it is installed.



Click on finish

